


ALL SPECIFICATION QUANTITIES ARE AS PER THE APPROVED PLANS, AGREED UPON BY THE CLIENT AND HOUSE ZERO. LISTED SPECIFICATIONS ARE SUBJECT TO CHANGE DEPENDING ON PRODUCT AVAILABILITY AND PROJECT CONVENIENCE. THE CLIENT WILL BE INFORMED REGARDING ANY DEVIATIONS FROM THE LISTED SPECIFICATION DOCUMENT. HOUSE ZERO HAS A RIGHT TO LIMIT THE SELECTION OF OPTIONS FOR SPECIALISED ITEMS, AS PER AVAILABILITY. EACH SPECIFICATION ITEM IS SUBJECT TO THE TERMS AND CONDITIONS FROM EACH SUPPLIER, HOUSE ZERO DOES NOT TAKE ANY LIABILITY FOR DELAYS FROM SUPPLIERS ALL MATERIALS HEREIN SPECIFIED ARE SUBJECT TO AVAILABILITY. IF ANY MATERIALS ARE NOT READILY AVAILABLE OR CLEARLY SPECIFIED THE CONTRACTOR MAY HAVE THE RIGHT TO USE THE NEAREST SUBSTITUTE MATERIAL AVAILABLE. ALL STRUCTURAL WORK, ELECTRICAL & PLUMBING POINTS, CONNECTIONS & FIXTURES ARE AS PER ARCHITECT'S PLANS AND SCHEDULES AS AGREED UPON BY THE CLIENT & HOUSE ZERO. WHERE NECESSARY REFER TO ANNEXURE GREYWATER, ANNEXURE SOLAR, ANNEXURE BATHROOM FINISHES & ANNEXURE KITCHEN.

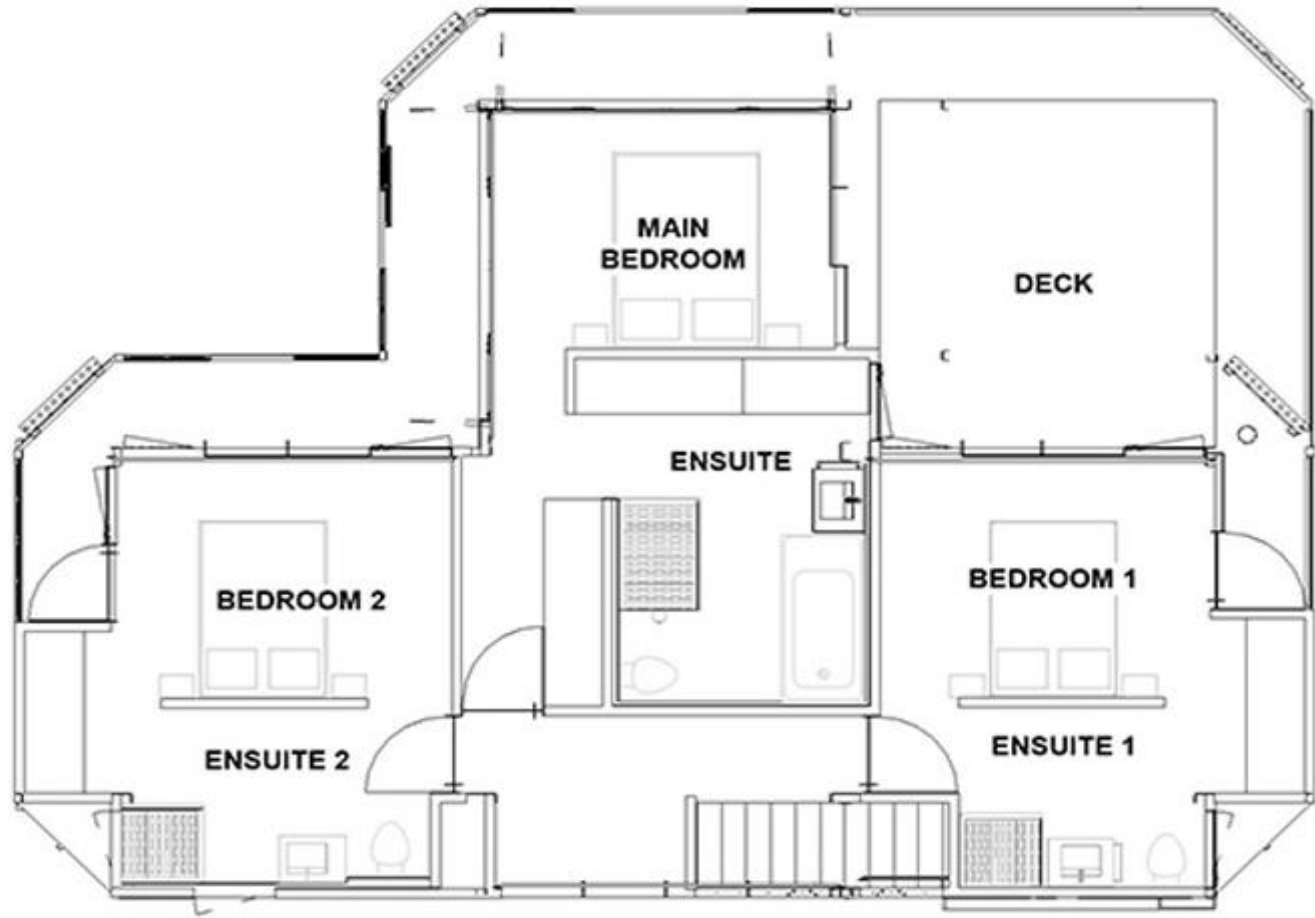
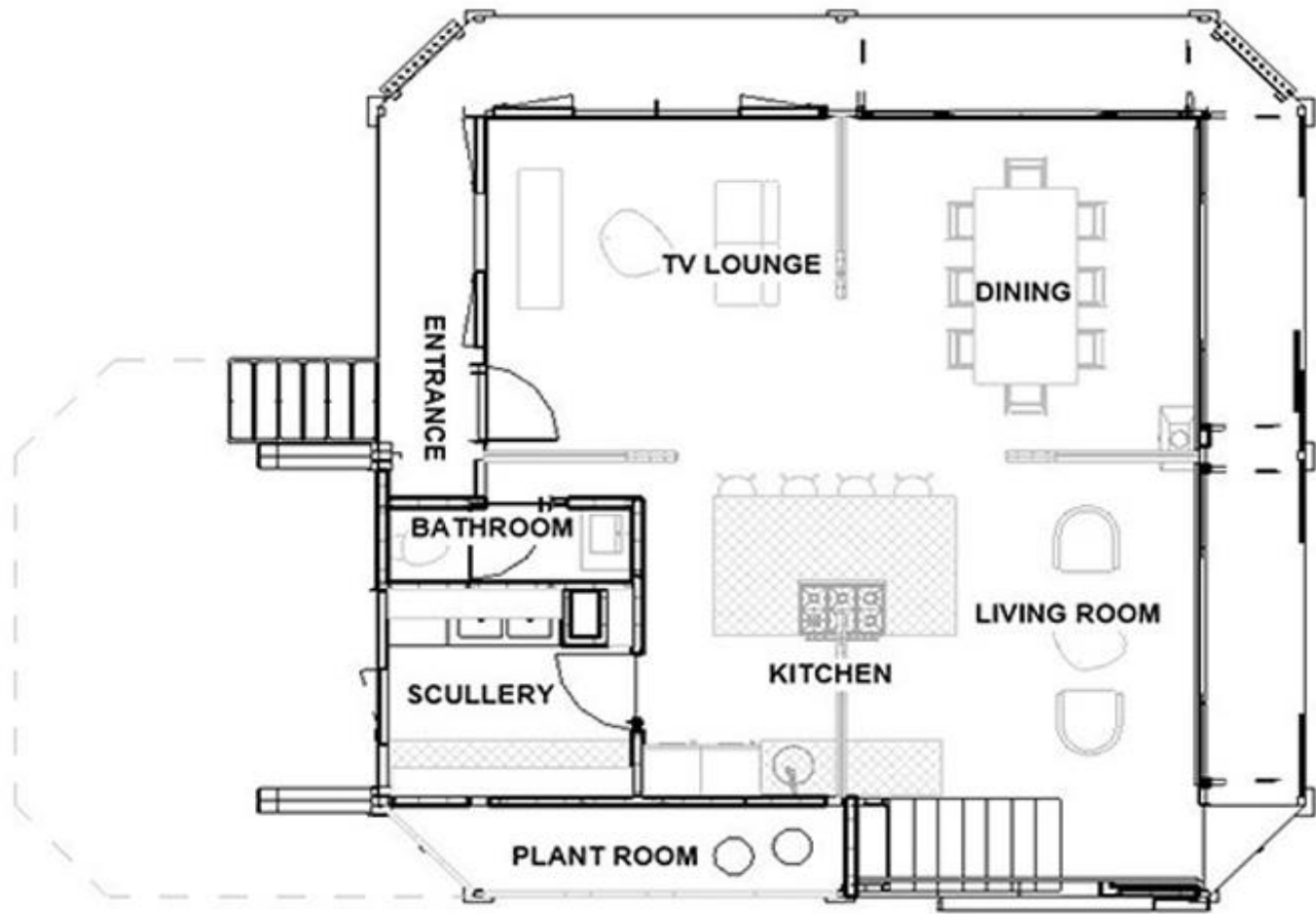
NEW DWELLING






SCHEDULE OF FINISHES FOR ALBATROSS

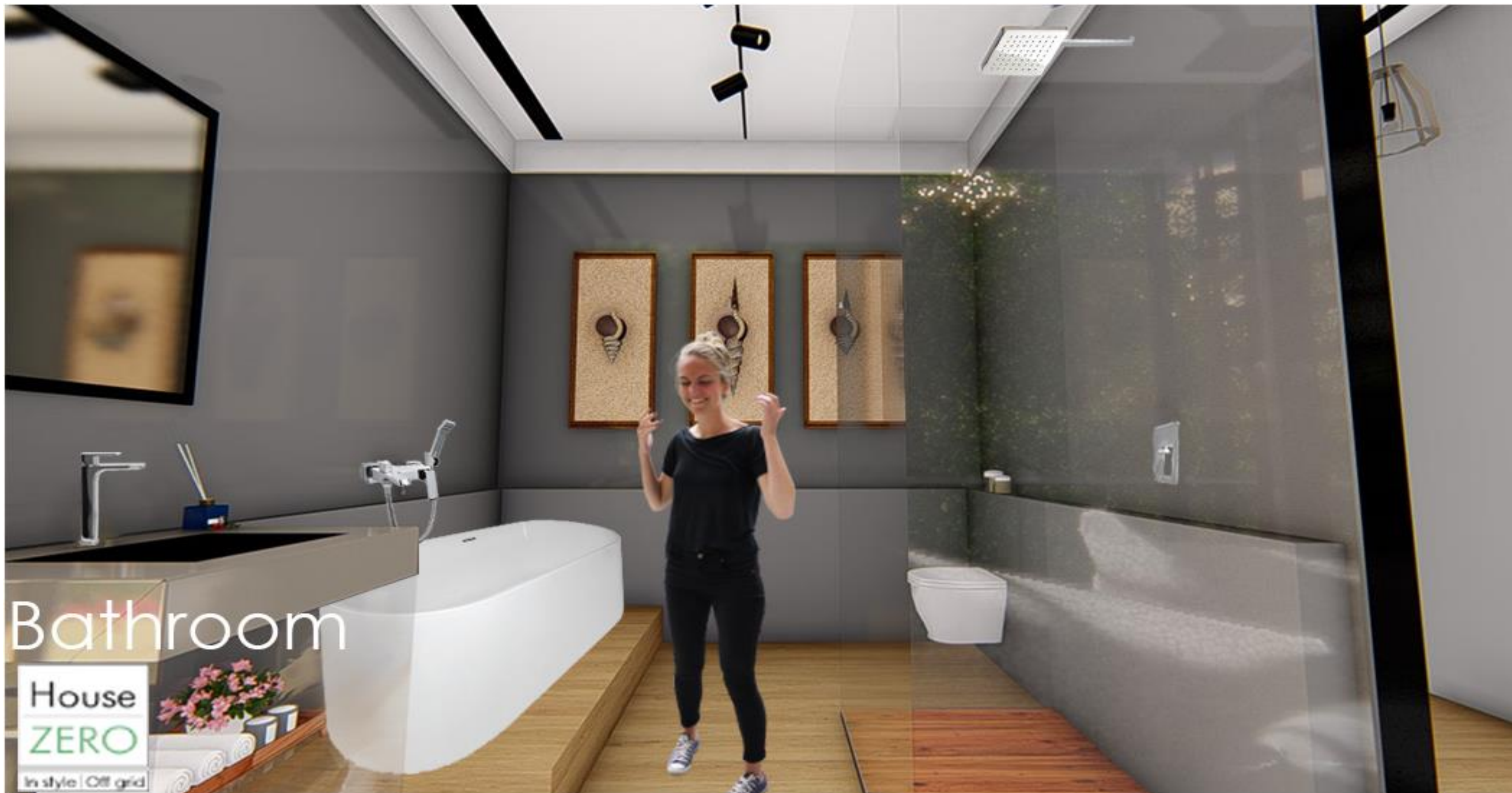









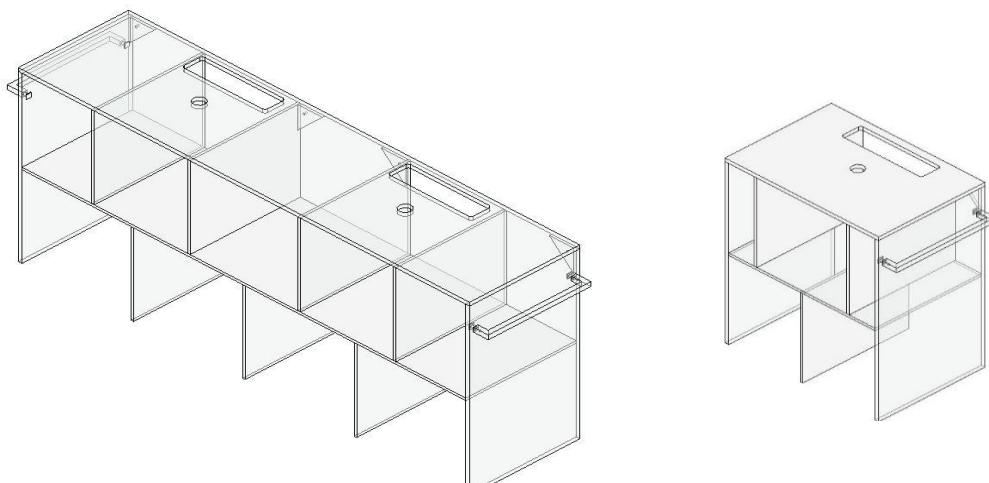
GENERAL

| ITEM | REFERENCE |
|---|---|
| INTERIOR & EXTERIOR WALLS HOUSEZERO WALL SYSTEM |  |
| DOORS & WINDOW FRAMES HOUSEZERO FENESTRATION SYSTEM | |
| ROOF & CEILING HOUSEZERO ROOF SYSTEM | |
| CORNICES & SKIRTINGS HOUSEZERO SYSTEM | |
| STAIRCASE HOUSEZERO MILD STEEL STAIRCASE WITH ENGINEERED WOOD TREADS | |
| BLINDS HOUSEZERO SYSTEM | |
| FIREPLACE HOUSEZERO BLACK MILD STEEL | |
| WATER HEATING 600 LITRE SOLAR HEATING SYSTEM WITH A GAS BACKUP | |
| GREYWATER RECYCLING SYSTEM INCLUDING HYDROPONICS HOUSEZERO 5000 LITRE | |
| SOLAR POWER 4.3 KW HOUSE ZERO SOLAR ELECTRICITY SYSTEM | |

QUALIFYING REMARKS: COLOURS, SHADES & BRANDS OF FINISHES OR FIXTURES INDICATED IN THE ABOVE ILLUSTRATION MAY DIFFER IN REALITY



| Kitchen Materials & Fittings | | | | |
|---|---|--|---|--|
| Item | Reference | | | |
| Materials | | | | |
| COUNTER TOPS WHITE COLOURED GLASS (PER CLIENT) |  | | | |
| CUPBOARD DOORS WHITE COLOURED GLASS (PER CLIENT) | | | | |
| BACK OF CARCASS AGAINST HOUSE POLISHED STAINLESS STEEL (GLASS TO BE PAINTED) (WHITE) | | | | |
| CARCASS OF KITCHEN POLISHED STAINLESS STEEL | | | | |
| SHELVES POLISHED STAINLESS STEEL | | | | |
| DOUBLE SINK HOUSEZERO STAINLESS STEEL SINK | | | | |
| PREP BOWL HOUSEZERO STAINLESS STEEL SINK | | | | |
| KITCHEN MIXERS STAINLESS STEEL MODERN MIXER | | | | |
| Appliances | | | | |
| HOB LOW PROFILE SMEG STAINLESS STEEL 5 BURNER GAS HOB OR EQUIVALENT |  | OVEN CLASSIC SMEG STAINLESS STEEL & BLACK GLASS GAS OVEN OR EQUIVALENT |  | |
| MICROWAVE SMEG BUILT IN STAINLESS STEEL MICROWAVE OR EQUIVALENT |  | KITCHEN MIXER COBRA BORDO SQUARE PILLAR SINK MIXER CHROME OR EQUIVALENT |  | |

| BATHROOMS MATERIALS & FITTINGS | | | | |
|--|---|--|---|--|
| ITEM | REFERENCE | | | |
| WALLS GLASS PAINTED (PER CLIENT) |  | | | |
| SHOWER TRAY STAINLESS STEEL BASE SHOWER TRAY, CUSTOM HOUSE ZERO DESIGNED, TEAK FINISHED | | | | |
| BATH MODERN FREESTANDING BATH | | | | |
| CISTERN / TOILET BACK TO WALL PAN | | | | |
| BATH MIXER WALL MOUNTED MIXER | | | | |
| SHOWER MIXER CONCEALED SHOWER MIXER | | | | |
| SHOWER ARM SQUARE SHOWER ARM | | | | |
| BASIN SURFACE MOUNTED MODERN SQUARED EDGES BASIN | | | | |
| BASIN MIXER STAINLESS STEEL MODERN SQUARE MIXER | | | | |
| BASIN VANITY GLASS VANITY | | | | |
| SHOWER ROSE SQUARE SHOWER HEAD | | | | |
| MIRROR CUSTOM HOUSE ZERO FRAMELESS MIRROR | | | | |
| FITTINGS | | | | |
| BASIN MIXER COBRA BORDO SQUARE MIXER CHROME OR EQUIVALENT |  | SHOWER MIXER COBRA BORDO SQUARE CONCELAED MIXER CHROME OR EQUIVALENT |  | |
| BATH MIXER COBRA BORDO SQUARE BATH & HAND SHOWER CHROME OR EQUIVALENT |  | BATH MIXER DIVERTER COBRA BORDO SQUARE DIVERTER CONCEALED MIXER CHROME OR EQUIVALENT |  | |
| SHOWER ARM SPLASHWORKS LONG SQUARE CHROME OR EQUIVALENT |  | SHOWER ROSE SPLASHWORKS (200 x 157mm) CHROME OR EQUIVALENT |  | |
| BATH BIJOU CHATEQUX (FREESTANDING) (1720mm x 820mm x 600mm) OR EQUIVALENT |  | BASIN TAHITI FREESTANDING BASIN (400mm x 420mm x 155mm) OR EQUIVALENT |  | |
| TOILET VAAL ENTICE OR EQUIVALENT |  | DOUBLE/SINGLE BASIN VANITY CLEAR GLASS |  | |
| QUALIFYING REMARKS: COLOURS, SHADES & BRANDS OF FINISHES OR FIXTURES INDICATED IN THE ABOVE ILLUSTRATION MAY DIFFER IN REALITY | | | | |

BUILT IN CUPBOARDS

REFERENCE

HOUSEZERO BUILT IN CUPBOARDS
MADE FROM STAINLESS STEEL SUPPORTS



QUALIFYING REMARKS: COLOURS, SHADES & BRANDS OF FINISHES OR FIXTURES INDICATED IN THE ABOVE ILLUSTRATION MAY DIFFER IN REALITY

LIGHTING & ELECTRICAL

ITEM

REFERENCE

TRACK LIGHTS
TRACKS WITH SPOTLIGHTS



LIGHT SWITCHES
ONE/TWO/THREE/FOUR LEVER ONE WAY
SWITCH VERTICAL (VETI RANGE)



SMALL PENDANT
CUSTOM HOUSEZERO MANUFACTURED



LARGE PENDANT
CUSTOM HOUSEZERO MANUFACTURED

SOCKET OUTLET
DOUBLE 16A RSA WITH DOUBLE 16A RSA V-
SLIM (VETI RANGE)



QUALIFYING REMARKS: BRANDS OF FINISHES OR FIXTURES INDICATED IN THE ABOVE ILLUSTRATION MAY DIFFER IN REALITY

| STRUCTURE | |
|--|---|
| ITEM | REFERENCE |
| STEELWORK STRUCTURAL STEEL, CORROSION TREATED WITH DISOLAC ISO 12944 & PAINTED BLACK |    |
| DECKING SALIGNA TREATED WOOD | |
| FIXED & OPENING DOORS & WINDOWS HOUSEZERO GLAZING, 8mm TOUGHENED GLASS | |
| SHUTTERS HOUSEZERO STEEL FRAMED WITH MERANTI WOOD | |
| ENGINEERED WOOD FLOORING 15mm ENGINEERED WOOD FLOORING WHITE OAK | |
| QUALIFYING REMARKS: COLOURS, SHADES & BRANDS OF FINISHES OR FIXTURES INDICATED IN THE ABOVE ILLUSTRATION MAY DIFFER IN REALITY | |